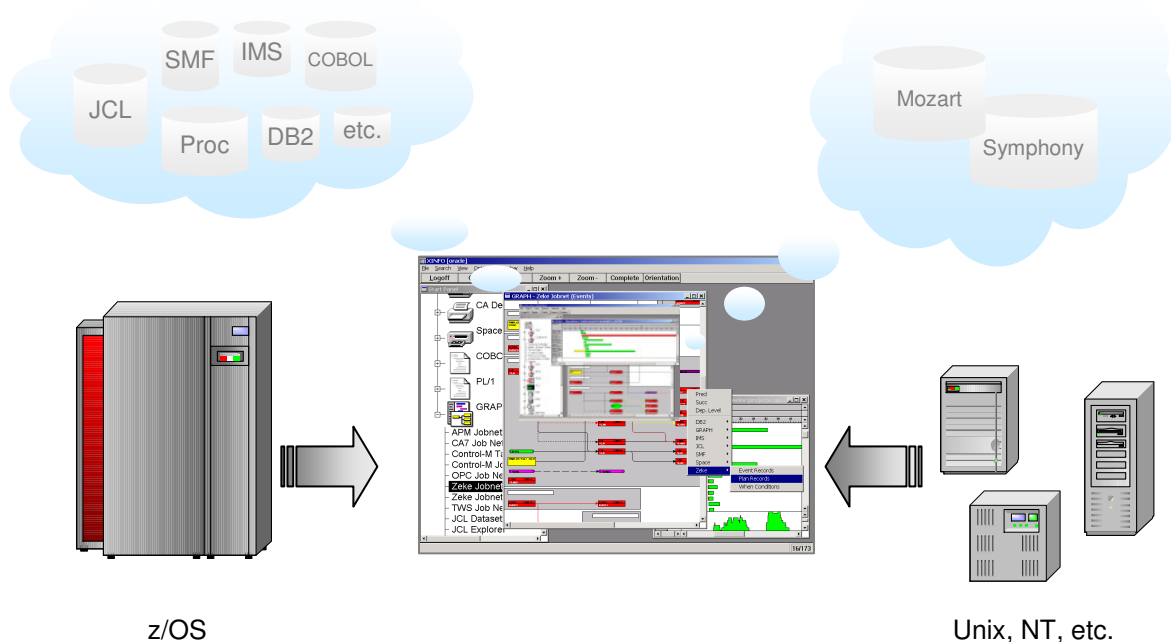


XINFO

TWS

As a user of TWS, you know how important this system is for planning, automation, and control of your batch processing. With perhaps hundreds or thousands of jobs running every night, TWS is critical to the completion of your batch production.

However, as projects grow, they become harder and harder to manage. When you are faced with problems, change requests or simply the need to have TWS information available: XINFO is the only choice.



XINFO's PC client shows your TWS data and displays the result in a way you have never seen it before. Operations are shown as easy-to-understand netplans and barcharts.

XINFO - The IT Information System

Use XINFO to distribute TWS information, even via the Internet or Intranet. Use any Browser to access production information from anywhere at anytime. Visit our homepage and see an example: www.horizont-it.com.

HORIZONT
Software for Datacenters

Garmischer Str. 8
D-80339 München
Tel. ++49 (0) 89 / 540 162 - 0
www.horizont-it.com

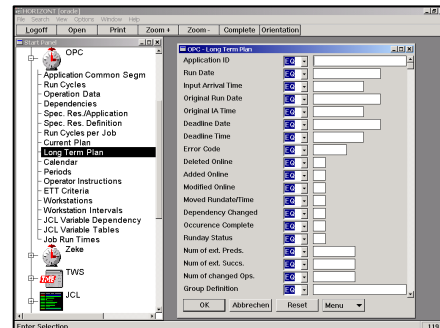
XINFO

TWS

Areas of Application

XINFO is the program for anyone who needs information about TWS definitions or actual plan data.

- Production planning
- Production control
- Application programmers
- Non IT departments
- Project and test teams



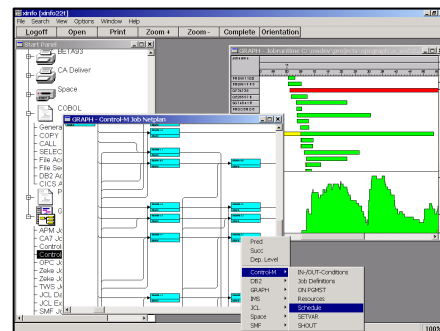
Dialogs

XINFO's PC Client enables you to enter selection criteria in predefined panels and display the results in tables. Of course there is also an ISPF Dialog.

Data Sources

XINFO analyses TWS definitions under z/OS, UNIX, Windows NT etc.

- AD, CP and LTP
- ETT and OI
- Special resource and workstation definitions
- Calendars, periods and variables
- Tracklog files
- Symphony and mozart files



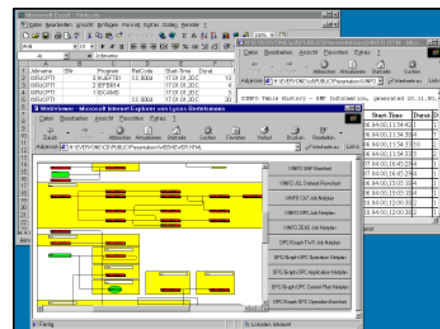
Graphics

XINFO represents your TWS data as clear graphics. Because: A picture is worth more than a thousand words!

Graphics

XINFO displays your TWS definitions as easy-to-read graphics:

- z/OS operation netplans
- Netplans with distributed schedules and jobs
- Supports all printers and plotters



Representation

XINFO enables you to share your data in various ways: Export Graphics to WinWord, tables to Excel, or distribute jobflows via the Intranet.