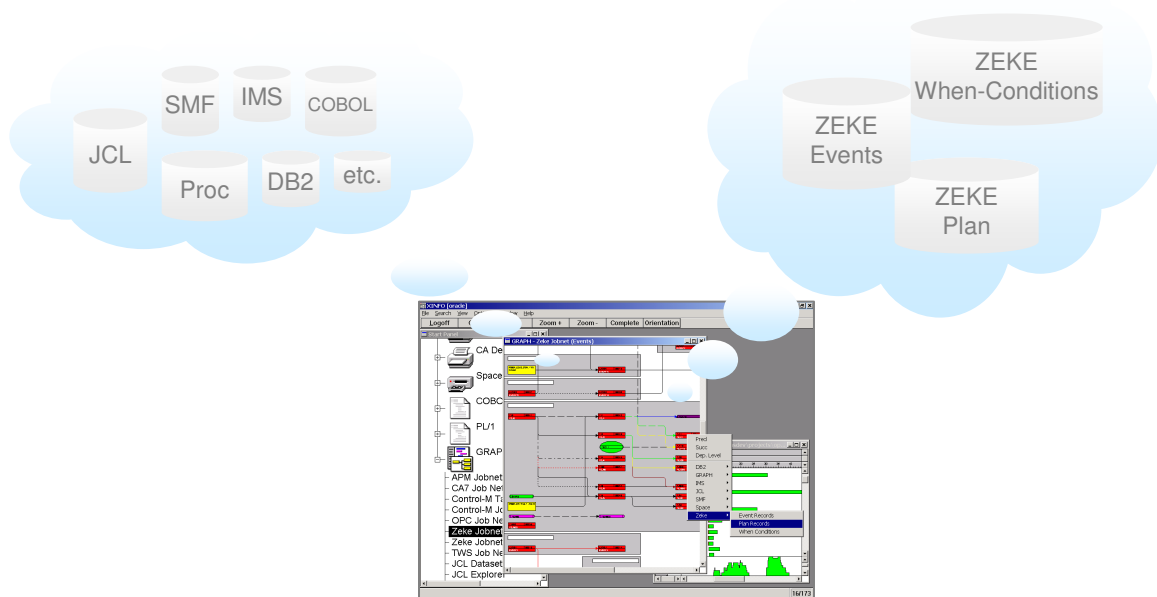


XINFO

ZEKE

As a user of ZEKE, you know how important this system is for planning, automation, and control of your batch processing. With perhaps hundreds or thousands of jobs running every night, ZEKE is critical to the completion of your batch production.

However, as projects grow, they become harder and harder to manage. When you are faced with problems, change requests or simply the need to have ZEKE information available: XINFO is the only choice.



XINFO - The IT Information System

XINFO's PC client shows your ZEKE data and displays the result in a way you have never seen it before. Jobs, events and when-conditions as easy to understand netplans.

Use XINFO to distribute ZEKE information, even via the Internet or Intranet. Use any Browser to access production information from anywhere at anytime. Visit our homepage and see an example: www.horizont-it.com.

XINFO

ZEKE

Areas of Application

XINFO is the program for anyone who needs information about ZEKE definitions or actual plan data.

- Production planning
- Production control
- Application programmers
- Non IT departments
- Project and test teams

Data Sources

XINFO analyses following ZEKE data:

- Event records
- Plan records
- When records

Data Elements

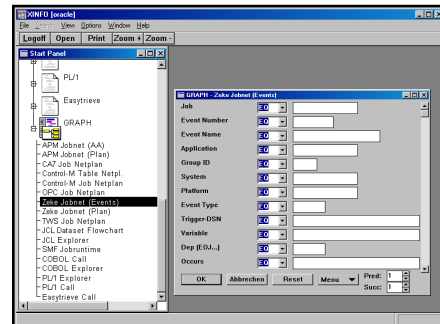
XINFO allows you to search and display following objects:

- JOB, MSG, COM, VCOM, SCOM, PCOM, PGM
- XEOJ, WEOJ, WEOG, VAR, NOTP, NOTJ, EOS, EOP, EOJ, EOG, EOE, DSN, BOP, BOJ, AEOS, AEOP, AEOJ, AEOE

Graphics

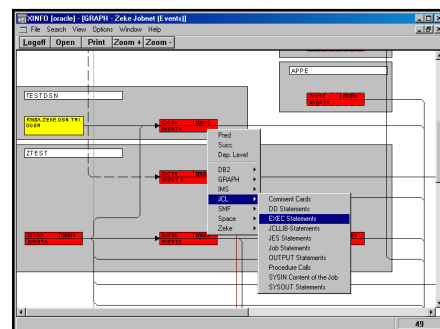
XINFO displays your ZEKE data as easy-to-read graphics:

- Job netplans including jobs, events and dataset triggers
- All predecessors or successors of a start job
- Supports all printers and plotters



Dialogs

XINFO's PC Client enables you to enter selection criteria in predefined panels and display the results in tables. Of course there is also an ISPF Dialog.



Graphics

XINFO represents your ZEKE definitions as clear graphics. Because: A picture is worth more than a thousand words!

Representation

XINFO enables you to share your data in various ways: Export Graphics to WinWord, tables to Excel, or distribute jobflows via the Intranet.