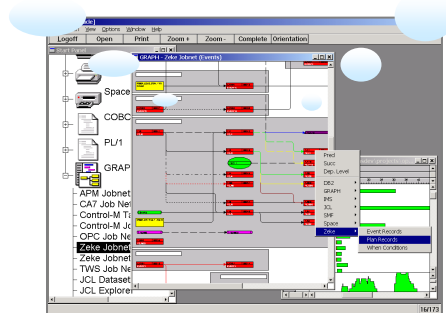
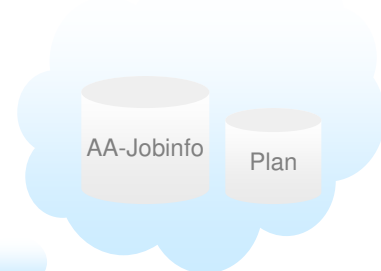
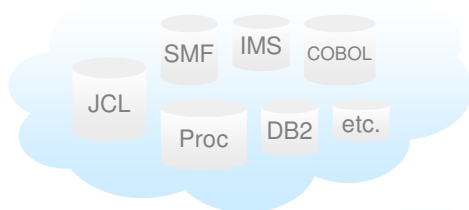


XINFO

HS 5000-APM

As a user of HS5000-APM, you know how important this system is for planning, automation and control of your batch processing. With perhaps hundreds or thousands of jobs running every night, HS5000-APM is critical to the completion of your batch production.

However, as projects grow, they become harder and harder to manage. When you are faced with problems, change requests or simply the need to have HS5000-APM information available: XINFO is the only choice.



XINFO - The IT Information System

XINFO's PC client shows your HS5000-APM data and displays the result in a way you have never seen before. Applications, jobs and dependencies are shown as easy-to-understand netplans and barcharts.

Use XINFO to distribute HS5000-APM information, even via the Internet or Intranet. Use any Browser to access production information from anywhere at anytime. Visit our homepage and see an example: www.horizont-it.com.

HORIZONT
Software for Datacenters

Garmischer Str. 8
D-80339 München
Tel. ++49 (0) 89 / 540 162 - 0
www.horizont-it.com

XINFO

HS 5000-APM

Areas of Application

XINFO is the program for anyone who needs information about HS5000-APM definitions or actual plan data:

- Production planning
- Production control
- Application programmers
- Non IT departments
- Project and test teams

Data

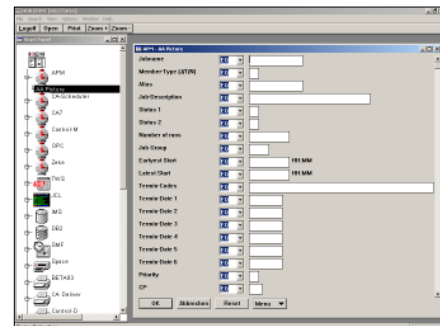
XINFO analyses AA Job information and the actual Plan:

- YSEQ: Job information such as Jobname, Member-Type, Number of runs, Job Group, Earliest Start, Latest Start
- YSEN: Net information and Dependencies
- PLAN: Net information for the actual Production cycle

Graphics

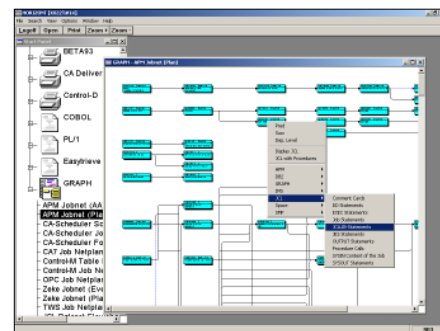
XINFO displays your HS5000-APM data in easy-to-read netplans and barcharts:

- Job netplans from AA definition
- Job netplans with actual plan data
- All printers and plotters are supported



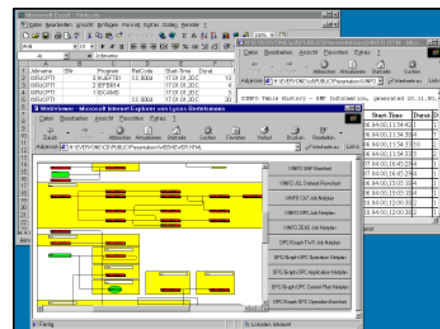
Dialogs

XINFO's PC Client enables you to enter selection criteria in predefined panels and display the results in tables. Of course there is also an ISPF Dialog.



Graphics

XINFO represents your HS5000-APM data as clear graphics. A picture is worth more than a thousand words!



Representation

XINFO enables you to share your data in various ways: Export Graphics to WinWord, tables to Excel, or distribute jobflows via the Intranet.