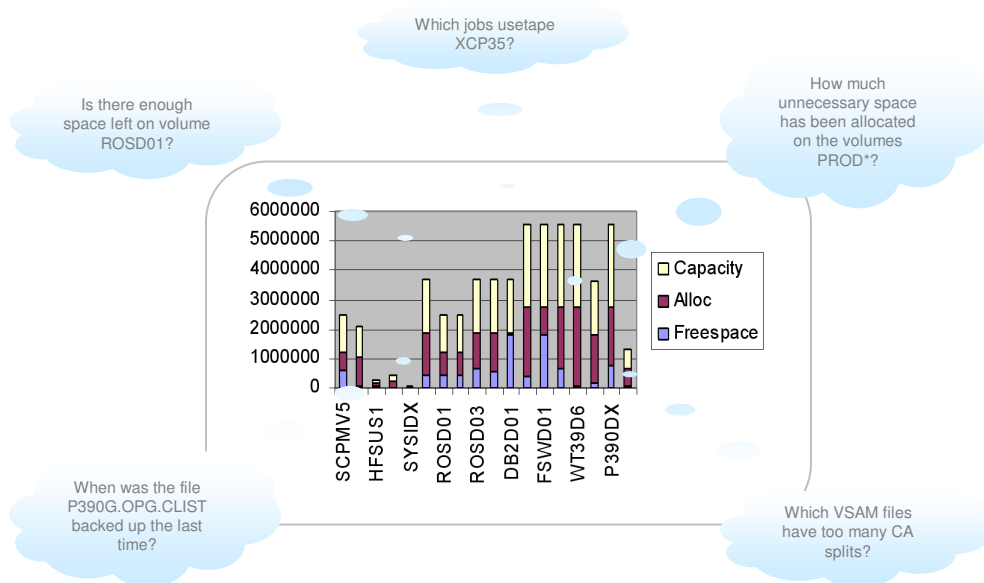


# XINFO

## Space

For years the amount of data being processed by data centers has been rising steadily. As a result, space management has steadily become more important.

Using VTOC, SMS, HSM and tape administration systems, such as RMM or CA-1, your data and storage space are reliably administered.



## XINFO - The IT Information System

For the user, the query and evaluation functions provided are inadequate: How much disk space is needed for a particular project? Which files have more than 10 extends? When was the last backup carried out? Which files are located on the TAPE device?

XINFO analyses the VTOC as well as the databases of the tape administration system (RMM or CA-1). The user can then quickly and easily access all necessary information regarding disk space, backups, tapes, VSAM files and so on.

# XINFO

Space

## Users

XINFO is not only an information system for the space management team but also for anyone who needs information about files, disk space, tapes, backups and so on:

- Application development
- Production planning
- Project groups
- Other departments

## Data sources

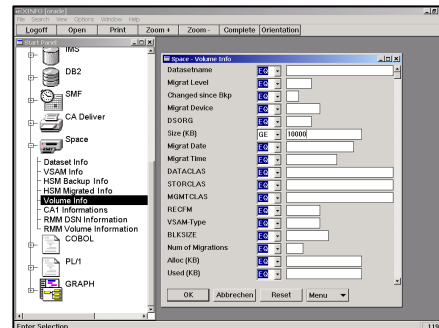
XINFO analyses the VTOC as well as the RMM or CA-1 databases:

- General information on PO, P, VSAM and GDG files (IDCAMS DCOLLECT)
- HSM backup (IDCAMS DCOLLECT)
- HSM migrated (IDCAMS DCOLLECT)
- CA-1 reports (TMSBINQ)
- RMM reports (EDGHSKP)

## Tables

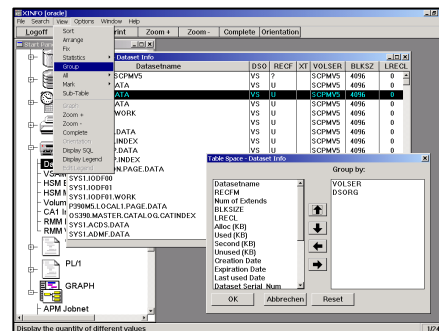
Query results are presented in tables. Simple statistical functions permit evaluation of, amongst other things:

- Physical file size
- Volume allocation and utilization
- Storage classes
- Management classes
- Expiration date



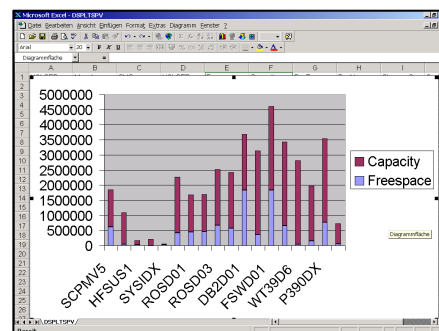
## Dialogs

XINFO has easy-to-use dialogs for entering search criteria. The results are displayed in tables. And, of course, there is also an ISPF dialog.



## Tables

XINFO presents query results in clearly arranged tables. Easy-to-use sorting, statistics and grouping functions permit extensive evaluation and documentation.



## Export

XINFO makes it easy to process your data in various ways: Just export the data to Excel and you immediately have extensive graphical and statistical functions available.