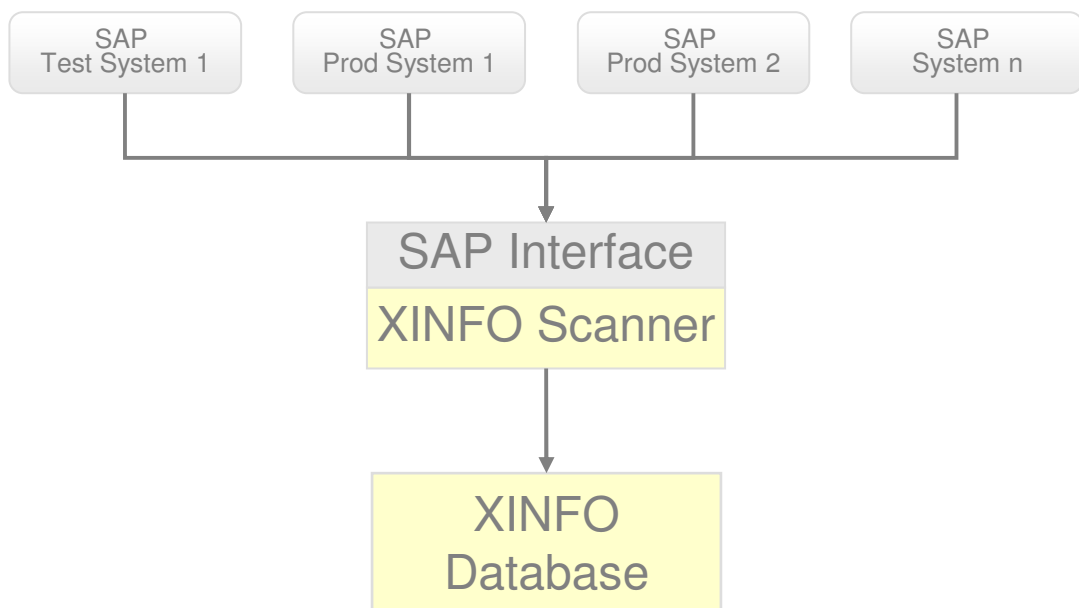


XINFO

SAP

The number of SAP systems and related SAP jobs is steadily growing. Applications are reading and writing data from/to several SAP systems.

Instead of „normal“ production jobs, that are controlled by JCL or scripts, the production planners must now plan and control SAP jobs. To do that, information about job definitions, runtimes, variants and much more must be available from all SAP systems.



Even if SAP itself offers various utility programs, the process of getting information is not very easy for all personal: A big number of systems running on different servers under different operating systems requires multiple users, passwords, access methods and so on.

XINFO - The IT Information System

XINFO analyses any number of SAP systems, resulting data is loaded into XINFO's unique repository. One single dialog system allows to query the database, data can be connected to other sources, e.g. scheduler definitions.

XINFO

SAP

Areas of Application

XINFO is the program for anyone who needs information about SAP definitions:

- Production planning
- SAP Administrators
- Departments

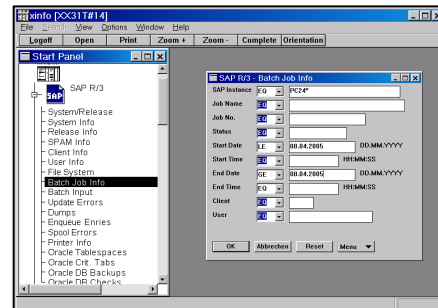
Data Sources

The SAP objects are extracted from an unlimited number of SAP systems by using SAP's RFC interface, as a result there is no need to install the scanner on all systems, one single PC with SAP access is sufficient.

Tables

The result of the analysis is shown in various tables::

- System und Release
- SPAM
- Clients
- User
- File System
- Job runtimes
- Batch Input
- Update Errors
- Dumps
- Enqueue Entries
- Spool Errors
- Printer Info
- Oracle Table spaces
- Oracle Backups
- Oracle Checks



Dialogs

XINFO's PC Client enables you to enter selection criteria in predefined panels and display the results in tables. Of course there is also an ISPF Dialog.

SAP Instance	Job Name	Start Date	Start Time	End Date	End Time
pc24_HOT_00	SAP_APPLICATION_STAT_COLLECTOR	29.03.2005	09:38:00	29.03.2005	09:38:00
pc24_HOT_00	SAP_CCMS_MONI_BATCH_DP	29.03.2005	09:38:00	29.03.2005	09:43:00
pc24_HOT_00	EUJ_PUT	29.03.2005	09:38:00	29.03.2005	09:39:00
pc24_HOT_00	SAP_REORG_SPOOL	29.03.2005	09:40:00	29.03.2005	09:40:00
pc24_HOT_00	SAP_REORG_JOBS	29.03.2005	09:41:00	29.03.2005	09:41:00
pc24_HOT_00	SAP_REORG_BATCHINPUT	29.03.2005	09:42:00	29.03.2005	09:42:00
pc24_HOT_00	SAP_REORG_ABAPDUMPS	29.03.2005	09:43:00	29.03.2005	09:43:00
pc24_HOT_00	SAP_REORG_JOBSTATISTIC	29.03.2005	09:44:00	29.03.2005	09:44:00
pc24_HOT_00	SAP_COLLECTOR_FOR_JOBSTATISTIC	29.03.2005	09:44:00	29.03.2005	09:44:00
pc24_HOT_00	ORANEXEKTENT_@9900000100	29.03.2005	09:45:00	29.03.2005	09:45:00
pc24_HOT_00	EUJ_REORG	29.03.2005	09:45:00	29.03.2005	09:49:00
pc24_HOT_00	ORANALYZE TAB_@9900000200	29.03.2005	09:45:00	29.03.2005	10:07:00
pc24_HOT_00	SAP_COLLECTOR_FOR_PERFMONITOR	29.03.2005	09:50:00	29.03.2005	09:50:00
pc24_HOT_00	SAP_CCMS_MONI_BATCH_DP	29.03.2005	09:52:00	29.03.2005	09:55:00
pc24_HOT_00	SAP_APPLICATION_STAT_COLLECTOR	29.03.2005	10:08:00	29.03.2005	10:08:00
pc24_HOT_00	SAP_APPLICATION_STAT_COLLECTOR	29.03.2005	10:20:00	29.03.2005	10:20:00
pc24_HOT_00	SAP_COLLECTOR_FOR_PERFMONITOR	29.03.2005	10:43:00	29.03.2005	10:43:00
pc24_HOT_00	SAP_CCMS_MONI_BATCH_DP	29.03.2005	10:52:00	29.03.2005	10:53:00
pc24_HOT_00	SAP_APPLICATION_STAT_COLLECTOR	29.03.2005	11:19:00	29.03.2005	11:19:00
pc24_HOT_00	SAP_APPLICATION_STAT_COLLECTOR	29.03.2005	11:49:00	29.03.2005	11:49:00
pc24_HOT_00	SAP_CCMS_MONI_BATCH_DP	29.03.2005	11:52:00	29.03.2005	11:53:00
pc24_HOT_00	SAP_APPLICATION_STAT_COLLECTOR	29.03.2005	12:19:00	29.03.2005	12:19:00
pc24_HOT_00	SAP_COLLECTOR_FOR_PERFMONITOR	29.03.2005	12:49:00	29.03.2005	12:49:00
pc24_HOT_00	SAP_CCMS_MONI_BATCH_DP	29.03.2005	12:52:00	29.03.2005	12:54:00
pc24_HOT_00	SAP_APPLICATION_STAT_COLLECTOR	29.03.2005	13:19:00	29.03.2005	13:19:00

Tables

XINFO presents query results in clearly arranged tables. Easy-to-use sorting, statistics and grouping functions permit extensive evaluation and documentation.

System	Jobname	Item	Jobname	UC4	Obj-Type	Job-ID
UC4	SAP_APPLICATION_STAT_COLLECTOR			UC4	JOB	

Links

Jump with a single mouse click directly from SAP to your Scheduler, and vice versa. Within one single dialog, with one single user.