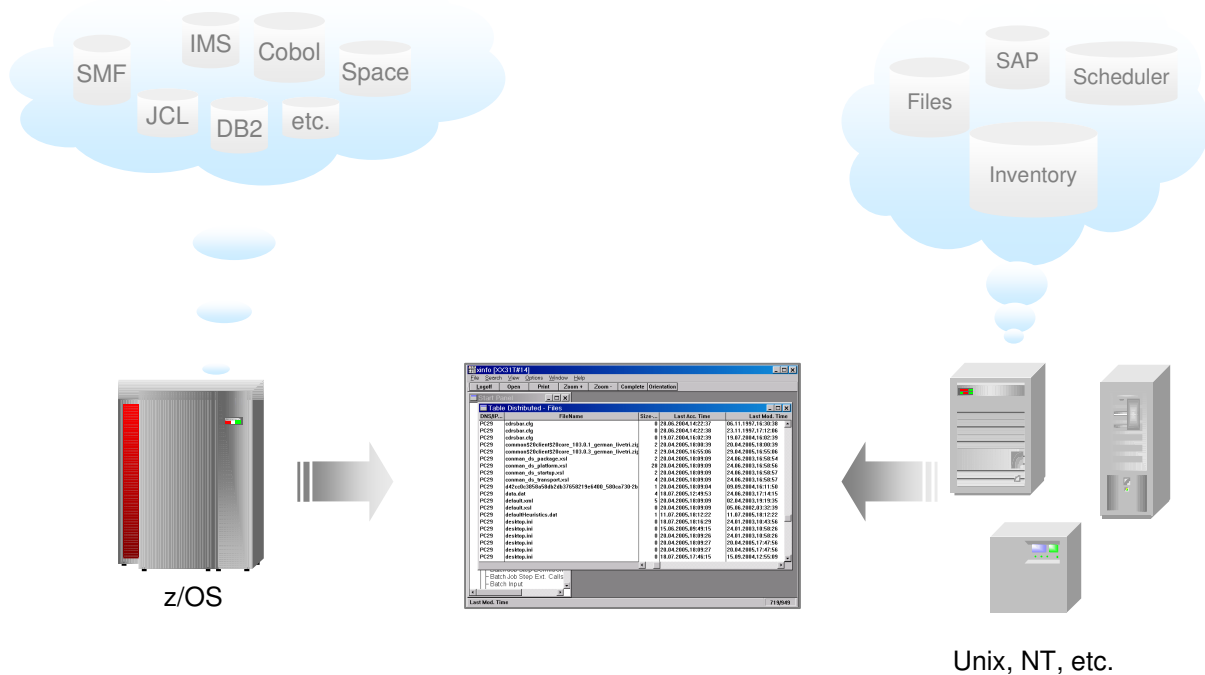


XINFO

Distributed

As somebody who is responsible for batch production, you know how important it is to know everything about jobs, datasets, runtimes etc. That information is the base for accurate planning, implementing, and control of your batch processing.

However, as IT systems grow, they become harder and harder to manage. Production is performed on several operating systems, zOS programs are creating data that are input to jobs running on Windows, AIX or Solaris, and vice versa.



XINFO, the IT-Information System

“XINFO distributed” collects information about files, volumes, software, services, SAP, and schedulers from AIX, Solaris and Windows boxes. The data is loaded into a centralized database. That enables you to query information about several platforms with one single application.

XINFO distributed answers questions like “How much free space do we have on our Solaris boxes?”, “Which software is installed on our Windows systems?”, “Is the service XYZ up and running on all machines?” and much more. Report- and statistical functions help you to better understand your IT infrastructure.

XINFO

Distributed

Areas of Application

XINFO distributed is the program for anyone who needs information about distributed systems.

- Production planning
- Production control
- Application programmers

Data Elements

XINFO scanners are available for following objects:

- File system, Volumes and Mount points
- Software and Hardware, Services and Daemons
- Process and Job History
- SAP
- Schedulers
 - TWS distributed
 - Control-M
 - UC4
 - Crontab

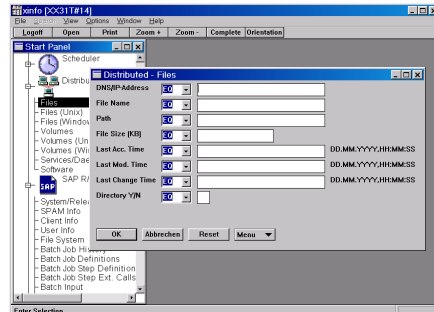
Operating Systems

XINFO scanners are available for following operating systems:

- Windows
- AIX
- Solaris
- Linux

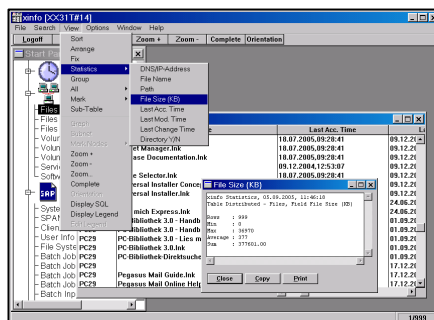
Software Requirements

- XINFO for DB2, ORACLE or MS-SQL
- Windows 2000 or XP Server (optional, not needed if you use existing FTP and scheduler)



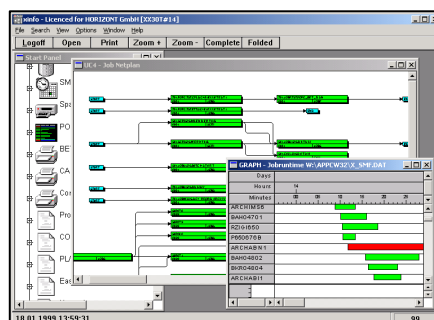
Dialogs

XINFO's PC Client enables you to enter selection criteria in predefined panels and display the results in tables. Of course there is also an ISPF Dialog, even for distributed information.



Tables

XINFO presents query results in clearly arranged tables. Easy-to-use sorting, statistics and grouping functions permit extensive evaluation and documentation.



Representation

XINFO enables you to share your data in various ways: Export Graphics to WinWord, tables to Excel, or distribute jobflows via the Intranet.