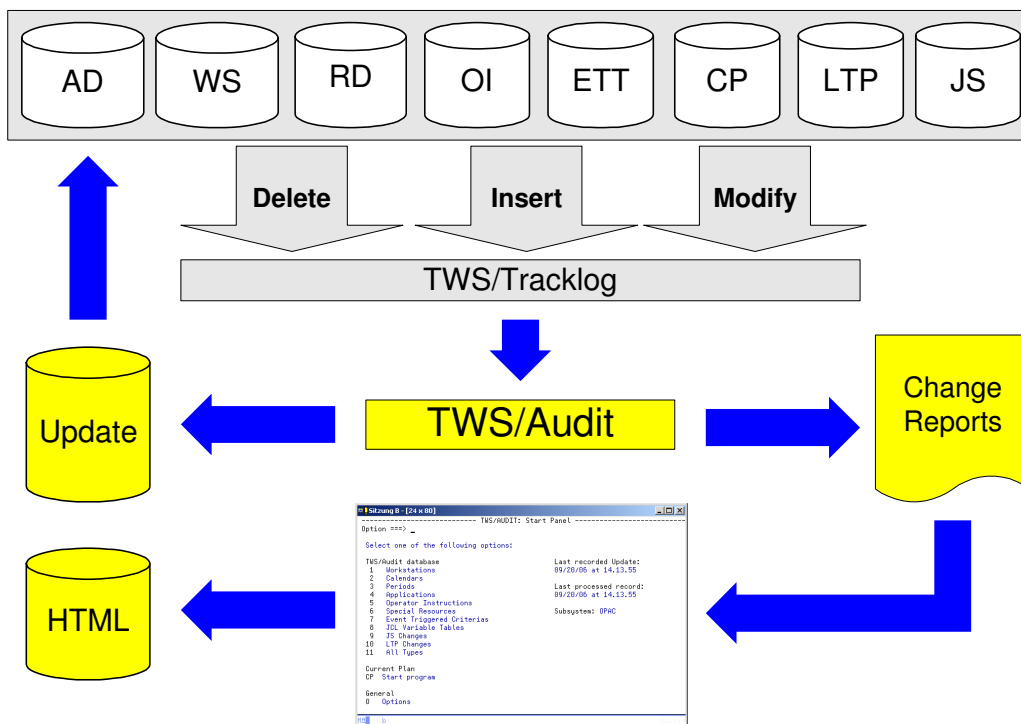


TWS/Audit

The Change Control System for your TWS for z/OS

TWS/Audit tracks and captures all changes made to the TWS for z/OS definition databases (AD, WS, RD etc.), the current plan (CP), the long term plan (LTP) and the JCL (JS) for analysis and reporting. Making it easy to detect modifications, insertions and deletions.

TWS/Audit tracks every version of your TWS for z/OS files. Roll-back to a previous revision level - even if the object has been deleted. Compare older versions of data to the current definitions in order to find errors faster.



A comfortable dialog program with many search criteria enables you to search for special records. Additionally all information can be written to HTML files, which can be distributed via Intra- or Internet.

Make extensive changes, with the confidence that recovery is always possible.

TWS/Audit, the Change Control System for your TWS for z/OS

TWS/Audit

The Change Control System for your TWS for z/OS

Areas of Application

TWS/Audit is an auditing system for anyone who are working with TWS for z/OS, or who needs information about modifications to TWS:

- Production planning
- Production control
- Auditors

Data sources

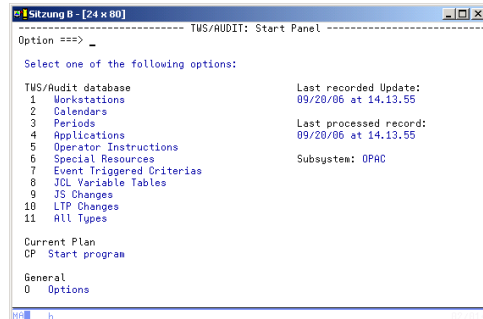
TWS/Audit analyzes TWS tracklog and JT files, the modified records are stored in its own database. TWS/Audit tracks all modifications for the following TWS objects:

- Application Descriptions
- Calendars
- Periods
- Special Resource definitions
- Variable tables
- ETT
- Operator Instructions
- Current Plan
- Long Term Plan
- JS File (JCL)

Versions

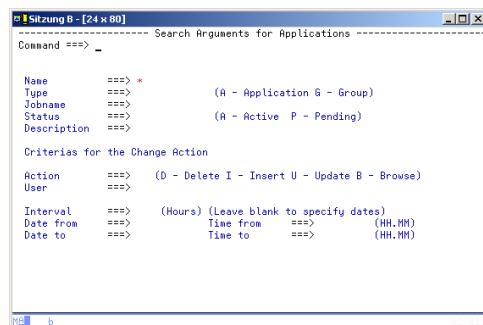
TWS/Audit saves an unlimited number of versions of TWS Applications:

- All versions can be compared
- All versions can be compared with the current version in the Application Description.
- TWS/Audit generates TWS batchloader statements to restore previous Application versions back to the Application Description
- TWS/Audit generates TWS/BatchAD control cards to restore all definitions.



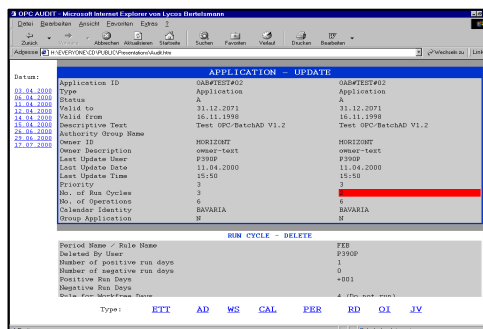
ISPF Dialog Startpanel

The user selects the database he wants to review.



Selection

Various selection criteria are available to locate a certain revision level.



HTML Output

The HTML output allows you to access audit information without ISPF, at anytime from anywhere.